



SERAPH D8/D8c  
SERAPH D8/D8c MWX

---

User Manual



The SERAPH D8/D8c conforms the following standards: EN 55022: 1998 + A1: 2000 + A2: 2003; class A; EN 55024: 1998 + A1: 2000 + A2: 2003; class A; in order for an installation of this product maintain compliance with the limits of a class A device, shielded audio cables must be used, not longer than 50 cm. Attention: This is a device of the class A and can cause interference to radio or television reception within the residential area. The user is encouraged to try to correct the interference by suitable measures.

© 15th July 2019, v2.0 MARIAN  
Hardware Design by MARIAN

All rights reserved. No part of this User's Guide may be reproduced or transmitted in any form or by any means, electronically or mechanically, including photocopy, translation, recording, or any information storage and retrieval system, without permission in writing from MARIAN. All trademarks are the property of the respective owners.

MARIAN is not liable for any damage to the software, hardware and data and costs resulting from it, which are caused by improper handling or installation of the hardware.

Technical changes are reserved.

# Contents

<b>1</b>	<b>Welcome</b>	<b>1</b>
<b>2</b>	<b>Before you start ...</b>	<b>2</b>
2.1	Features . . . . .	2
2.2	Installation . . . . .	2
2.2.1	Scope of Supply . . . . .	2
2.2.2	System requirements . . . . .	3
2.2.3	Hardware and software installation . . . . .	3
2.2.4	Driver and firmware updates . . . . .	3
2.3	Connections . . . . .	4
<b>3</b>	<b>Let's start: Basics</b>	<b>6</b>
3.1	Introduction . . . . .	6
3.2	The SERAPH D8/D8c in connection with digital devices . . . . .	6
3.2.1	Background . . . . .	6
3.2.2	What is a clock? . . . . .	6
3.2.3	The rules of the digital audio world . . . . .	7
3.3	Example: The SERAPH D8/D8c with 2 AES/EBU Converter . . . . .	7
<b>4</b>	<b>Let's start: Play</b>	<b>9</b>
4.1	Introduction . . . . .	9
4.2	Using a media playback program . . . . .	9
4.3	Using an ASIO music software . . . . .	9
4.4	Playback with the SERAPH D8/D8c . . . . .	10
4.5	Editing the Sound of Signals . . . . .	12
4.6	Setting up a separate stereo headphone mix for a musician . . . . .	12
4.7	Feeding an external effects device . . . . .	13
<b>5</b>	<b>Let's start: Recording</b>	<b>14</b>
5.1	Introduction . . . . .	14
5.2	Using a media playback program . . . . .	14
5.3	Using an ASIO (multi-channel) music software . . . . .	14
5.4	Assignment in the SERAPH D8/D8c routing . . . . .	15
<b>6</b>	<b>The SERAPH D8/D8c in Detail: Mixing and Routing</b>	<b>16</b>
6.1	Introduction . . . . .	16
6.2	Operation of Mixer and Routing . . . . .	16
6.3	View options . . . . .	17
6.4	Snapshots . . . . .	18
6.5	Setups . . . . .	18
6.6	The mixer in detail . . . . .	19
6.7	The routing in detail . . . . .	22
<b>7</b>	<b>The SERAPH D8/D8c in Detail: System settings</b>	<b>24</b>
7.1	Introduction . . . . .	24
7.2	Clock Status Panel . . . . .	24
7.3	Settings . . . . .	25
7.4	ASIO Device Setup . . . . .	29
<b>8</b>	<b>The SERAPH D8/D8c in Detail: TDM SyncBus</b>	<b>30</b>
8.1	Principles of the TDM SyncBus . . . . .	30
8.2	Examples the functionality of the TDM SyncBus . . . . .	30

<b>9</b>	<b>Appendix</b>	<b>32</b>
9.1	Service and Support . . . . .	32
9.2	Glossary . . . . .	33
9.3	Special Notes . . . . .	35
9.3.1	Clock settings when using ASIO . . . . .	35
9.3.2	Samplerate on record/playback . . . . .	35
9.3.3	Different samplerates on record/playback via ASIO . . . . .	35
9.3.4	Simultaneous playback on one device via ASIO . . . . .	35
<b>10</b>	<b>Technical Facts</b>	<b>37</b>

# 1 Welcome

The MARIAN team proudly presents to you the SERAPH D8/D8c, thanking you for your confidence. A new abundance of functions while at the same time maintaining an intuitive handling - these high expectations we try to meet in this product. In the SERAPH D8/D8c you can see newest technologies merging with long proven experience and development skills into a powerful DAW (Digital Audio Workstation). What is there to discover?

Of course, poured in hardware, the new processing unit, with much affection called the 'BEAST'. This newly-developed DSP mixer is nothing less than a full-fledged digital mixer with up to 56 channels, 8 mix sums and 224 EQs! Easily you create sub-mixes, that are perfect for either headphone mixes or sending feeds to reverb units thanks to the pre/post switches. For each of the full-parametric EQs, modeled in accordance to analogue prototypes, you can freely decide on which sub-mix it is to be effective. EQ on the main mix but not on the headphone mix or vice versa? With the mixer of the SERAPH D8/D8c this is not a problem any more.

The special features of this system cannot only be found in a 'BEASTly power', but also in its flexibility. This workhorse tows a separate routing matrix allowing to send any signal to any output or back to the input again. This includes even the playback signals of a user-software and the sums of the DSP mixer, which can thus be easily re-recorded on the same computer system or manipulated with the on-board EQs.

In a way this manual in your hand is kind of like a trainers whip to tame the fullness of the functions of the BEAST and to make them fit to your daily tasks in the studio. The chapters called 'Let's start' offer a quick introduction by explaining a simple playback and recording process. But you can also get in-depth information in the chapters 'SERAPH D8/D8c in detail', explaining all functions in detail and their relationship to each other. Finally, at the end of this manual, you can find a small glossary that will help you to explain unfamiliar terms.

And now we hope you'll enjoy trying out and getting to know your SERAPH D8/D8c! We are confident that this sound system in domesticated form will be a partner in the realization of all your music projects for years to come.

Your MARIAN Team

## 2 Before you start ...

### 2.1 Features

Your SERAPH D8/D8c is equipped with many useful functions. Here is a list of the features and options:

- ✓ PCIe card with 8 AES/EBU I/O and Wordclock Input
- ✓ 2 MIDI I/O (MWX version only)
- ✓ WordClock I/O (MWX version only)
- ✓ The BEAST
  - ★ 56 channel mixer, hardware-based, latency-free, 52 Bit
  - ★ 224 high-precision analog-feel EQs (in each channel: 1x low shelf, 2x peak, 1x high shelf)
  - ★ flexible and extensive mix, monitor, and routing functions
- ✓ Sample rates up to 192 kHz
- ✓ High quality samplerate converters on every input
- ✓ MARIAN SyncBus compatible and TDM SyncBus compatible
- ✓ Synchronization as clock master (Internal clock to the AES/EBU outputs, SyncBus or the Wordclock output )
- ✓ Synchronization as clock slave (processing an external clock at the AES/EBU, Wordclock or SyncBus )
- ✓ Fail-safe firmware update technology (automatic recovery of the firmware in case of errors)
- ✓ Advanced multi-client drivers for Windows™32/64bit: 2000<sup>1</sup>/7 and Server 2003/2008/2010
- ✓ Driver support: MME, ASIO 2.2<sup>2</sup>, WASAPI, WDM Audio, DirectSound

### 2.2 Installation

#### 2.2.1 Scope of Supply

After carefully opening the package of the SERAPH D8/D8c, please be sure to check if the following components are to be found complete and undamaged:

- ✓ 1 x SERAPH D8/D8c PCIe card
- ✓ 1x Slotbracket with cable for connection with main card (SERPAH D8c only)
- ✓ 2 x breakout cable with each 4 digital in/outputs
- ✓ 1 x MIDI/WordClock Extender with connector cable (MWX version only)
- ✓ 1 x cable for MIDI Input/output (MWX version only)
- ✓ 1 x CD-ROM with driver software and manual
- ✓ Quick Start

---

<sup>1</sup>only for 32bit Windows™

<sup>2</sup>On 32bit Windows™Version: ASIO 2.1

## 2.2.2 System requirements

For the successful and correct operation of the SERAPH D8/D8c your computer needs to meet the following minimum requirements:

- ✓ x86, x86-64 compatible Intel or AMD Processor; Operating System Windows<sup>TM</sup>32/64bit: 2000<sup>3</sup>/7 and Server 2003/2008/2010; DirectX 9c
- ✓ SERAPH D8: 2 free adjacent expansion slots (one free PCIe slot)
- ✓ SERAPH D8-C: 1 free expansion slot (one free PCIe slot) and 1 free slot or d-sub bay for the AES/EBU Extender
- ✓ A free slot for the MIDI/WordClock Extender (MWX version only)

Please note that the system requirements may be higher depending on the operating system and audio application used.

## 2.2.3 Hardware and software installation

In the brochure labeled "Quick Start" you will find all the installation steps as a graphical guide. If you still have any questions or in case that problems appear during the installation, please contact our support service. You will find all the different ways to contact the support services in the appendix of this manual.

## 2.2.4 Driver and firmware updates

In some cases, there is a driver update available for the SERAPH D8/D8c in the download section of the MARIAN homepage. It may include:

- ✓ Functional improvements of the driver and/or the user interface (s)
- ✓ Adjustments to new operating systems and/or their new components (updates and service packs)
- ✓ Compatibility upgrades to audio applications and third-party applications

When performing a driver update please follow the instructions provided in the 'readme.htm' file, which is part of the packed folder of the new driver files<sup>4</sup>.

**Important:** In the course of a driver update it may become necessary for the firmware of the SERAPH D8/D8c to be updated. Whether a firmware update is necessary or not, can only be determined after an installation/update was performed. The firmware upgrade will then be executed automatically. The Fail-safe firmware update technology MARIAN protects the SERAPH D8/D8c against errors, which could occur due to the interruption of the update process, such as a power failure. If normally this would result in a total malfunction of a system, the fail-safe technology ensures that at the next initialisation of the SERAPH D8/D8c a core firmware is loaded. Thus the sound card may again be detected correctly by a Windows<sup>TM</sup> system.

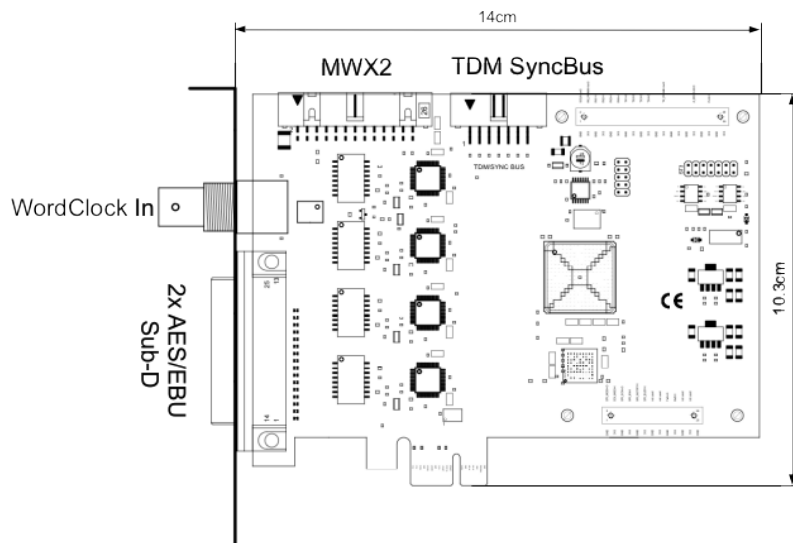
---

<sup>3</sup>only for 32bit Windows<sup>TM</sup>

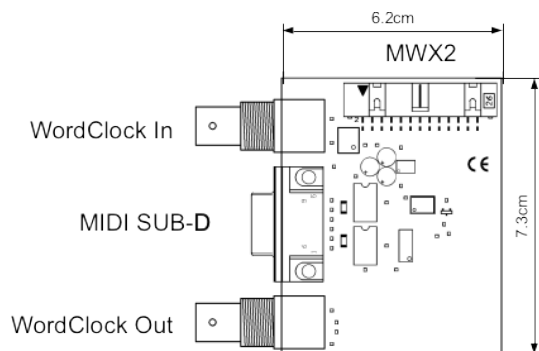
<sup>4</sup>Even if the Windows<sup>TM</sup> Explorer is capable of displaying compressed files – for installing the driver (update) a full decompression is required!

## 2.3 Connections

### SERAPH D8/D8c



### MWX2 (optional)



### AES/EBU Sub-D

The Sub-D connector is Tascam-format compatible and may be directly connected with devices supporting this format as well. Alternatively the provided breakout cable with the AES/EBU connectors may be used.

### TDM SyncBus

If other MARIAN sound systems with TDM SyncBus option are installed they may be connected using a TDM SyncBus cable<sup>5</sup>. Other MARIAN sound systems with SyncBus option only, may be connected via an adapter cable. Both cables can be ordered in the MARIAN webshop.

### MWX2

Use the supplied ribbon cable to connect the optional MWX.

<sup>5</sup>Audio signals may only be exchanged between MARIAN TDM SyncBus compatible systems. Clock- and start/stop synchronization is possible between all MARIAN systems.



## WordClock

This connector is used to integrate the SERAPH D8/D8c into a WordClock/SuperClock network. If the SERAPH D8/D8c is the last card in a chain of devices, then the WordClock termination has to be activated in the settings of the SERAPH D8/D8c manager.

## 3 Let's start: Basics

In this chapter you will learn

- ✓ The fundamentals of Digital Signal Processing,
- ✓ To avoid problems/errors when connecting digital devices
- ✓ To setup the SERAPH D8/D8c correctly with 2 AES/EBU converters.

### 3.1 Introduction

The SERAPH D8/D8c sound system is a purely digital system. For connecting other devices this brings along some specialties. Basic rules (an output is connected to an input, and vice versa) certainly do need not be explained here again. For digital audio signals, however, the clock plays an important role. Following you will thus find some background notes and an example setup for the correct wiring to external equipment<sup>6</sup>.

### 3.2 The SERAPH D8/D8c in connection with digital devices

#### 3.2.1 Background

Between analog and digital audio signals, there is an essential difference: Analog audio signals are continuous. Thus, for each possible moment, these signals can be measured, and at each point of time it is possible to receive a specific measurement value. Digital audio signals however consist of many individual values (samples), followed by each other with intervals of a specific rate (sample rate). In this case it is not possible to obtain a measurement at any time, but only as often as given by the sampling rate. Example: If the samplerate provides a value only every second, it is not going to be possible to measure in between, e.g. at the time of half a second.

#### 3.2.2 What is a clock?

There has to be something that governs at which moment a digital value may be send or received, because this is essential for the accurate communication of digital devices. Precisely this is the task of the clock. It is a pulse or rate generator. The rate, that the clock has, defines the samplerate.

*Let's illustrate this with an example:* Imagine an orchestra with a conductor in front. The maestro raises and lowers the baton - he indicates the beat. The musicians now play fast or slow depending on his guide<sup>7</sup>.

Thus the conductor is the clock and the speed with which the orchestra plays, that is the samplerate.

What happens when an orchestra plays without the conductor? – Total Chaos! Every musician could, depending on the personal mood play at a different speed - depending on musical stile the result would sound more or less useful ...

The same problem exists for audio devices if they are connected without a proper configuration of the digital clock. Just like in the orchestra situation it must be defined who is the Maestro (the master) and who are the performers (the slaves). Thus we can conclude the following rules:

---

<sup>6</sup>In the chapter 'The SERAPH D8/D8c in detail III: system settings' you will find the clock setting of the manager of the SERAPH D8/D8c explained in detail. Additionally we recommend a look in the appendix for in depth understanding

<sup>7</sup>All conductors amongst the readers may excuse this crude simplification in favor for the appealing simplicity of the example.

### 3.2.3 The rules of the digital audio world

If two or more digital audio devices are connected, the following three simple rules apply:

- ✓ All devices must be synchronized with each other. (By the clock!)
- ✓ There can be only one! And only one device that sets the clock (the master). All other devices must synchronize to the clock of the master and are therefore 'slaves'<sup>8</sup>
- ✓ Digital audio connections already include a clock signal (S/PDIF, ADAT, MADI or AES/EBU). Alternatively, the synchronization may be accomplished by a WordClock or super clock network. Within a compound of various digital audio devices though, the clock must be the same at every point of the network.

## 3.3 Example: The SERAPH D8/D8c with 2 AES/EBU Converter

Imagine the following: You own 2 (or more) separate analog to digital converters with AES/EBU output. You wish to record the signals using the SERAPH D8/D8c and thus have to find a correct clock setup to avoid synchronization errors during the recording. Depending on the features of the converter, the following methods might be used:

### The AES/EBU converters include a free AES/EBU input

In this case the SERAPH D8/D8c may be clock master and synchronize the converters using their inputs. This is how to proceed:

1. Connect each AES/EBU pair of the SERAPH D8/D8c with one converter. (AES/EBU In 1 of the SERAPH D8/D8c with the AES/EBU out of the first converter and AES/EBU Out 1 at SERAPH D8/D8c with AES/EBU in of the first converter. And so on.
2. Configure each converter, so that it uses its AES/EBU input as clock source (slave mode)
3. In the Windows<sup>TM</sup> task bar, click on the icon of the SERAPH D8/D8c and select < Settings >.
4. In < Synchronisation > < DirectSound/MME Clockquelle > select 'Internal'.
5. For ASIO Audio applications: open the ASIO audio application and select for the 'ASIO SERAPH D8/D8c' driver the clock source 'Internal'
6. Check if the clock of each input is recognized correctly, using the status panel of the SERAPH D8/D8c manager. And also, if changes in samplerate of the SERAPH D8/D8c are consequently followed also by the converters.

### The AES/EBU converters provide a wordclock input and the SERAPH D8/D8c MWX is available

Also in this case, the SERAPH D8/D8c may be clock master, synchronizing the AES/EBU converters using their wordclock inputs. This is how to proceed:

1. Connect each AES/EBU output of each converter with one AES/EBU input of the SERAPH D8/D8c. Furthermore, connect the wordclock output of the MWX to each wordclock input of each converter using a daisy-chain. Activate the termination on the last device.

---

<sup>8</sup>The only exceptions are devices with activated samplerate converters. They may exchange signals independently of the clock of other devices. (as the SERAPH D8/D8c)

2. Configure each converter, so that it uses its wordclock input as clock source (slave mode)
3. In the Windows<sup>TM</sup> task bar, click on the icon of the SERAPH D8/D8c and select < Settings >.
4. In < Synchronisation > < DirectSound/MME Clockquelle > select 'Internal'.
5. For ASIO Audio applications: open the ASIO audio application and select for the 'ASIO SERAPH D8/D8c' driver the clock source 'Internal'
6. Check if the clock of each input is recognized correctly, using the status panel of the SERAPH D8/D8c manager. And also, if changes in samplerate of the SERAPH D8/D8c are consequently also followed by the converters.

## **The AES/EBU converters provide AES/EBU outputs, only**

Also in this case, the samplerate converters of the SERAPH D8/D8c have to be used. This is how to proceed:

1. Connect each AES/EBU output of each converter with one AES/EBU input of the SERAPH D8/D8c.
2. Configure each converter, so that it uses its clock as clock source (master mode)
3. In the Windows<sup>TM</sup> task bar, click on the icon of the SERAPH D8/D8c and select < Settings >.
4. In < Synchronisation > < DirectSound/MME Clockquelle > select 'Internal'.
5. In < General > activate for all used inputs the option 'activate automatically' for the samplerate converters.
6. For ASIO Audio applications: open the ASIO audio application and select for the 'ASIO SERAPH D8/D8c' driver the clock source 'Internal'
7. Check if the clock of each input is recognized correctly, using the status panel of the SERAPH D8/D8c manager.

## 4 Let's start: Play

In this chapter you will learn how to

- ✓ Playback a signal with the SERAPH D8/D8c,
- ✓ Edit a signal with the functions of the mixer
- ✓ Create mixes of multiple signals for headphones or effect units

### 4.1 Introduction

In a recording studio there are a lot of cables going from the tape machine to the console in order to play back previously recorded signals. In the same way you can think of your audio software (the sequencer, etc.) being connected by many (virtual) wires to the SERAPH D8/D8c. With each of these cables, in Windows<sup>TM</sup> operating systems called 'device', two audio signals are transported. In total there are 16 devices available, which transport each two signals to the SERAPH D8/D8c using a specific driver interface. The 'driver interface' is like the type of audio cable used for the transmission of the signals. For media players Windows<sup>TM</sup> Direct Sound is the most often used interface, while multi-channel music programs (sequencer etc.) make use of the ASIO interface. The following is an explanation how to use each for playback with the SERAPH D8/D8c.

### 4.2 Using a media playback program<sup>9</sup>

#### Windows<sup>TM</sup>10

1. Within Windows, select < Start > < Settings > < System >
2. In the tab < Sound > for 'Sound Playback - Default device' select 'SERAPH D8/D8c 1-2'

#### Windows<sup>TM</sup>7

1. Within Windows<sup>TM</sup> select < Start > < Control Panel > < Hardware and Sound > < Sound >
2. In the tab < Playback > select the device 'DAW Out 1-2'
3. In the lower part of the window activate 'Set Default'

### 4.3 Using an ASIO (multi-channel) music software<sup>10</sup>

1. Start the ASIO audio application
2. Open the audio settings of the software
3. Select the 'ASIO SERAPH D8/D8c' driver
4. Near the selection for the ASIO driver the ASIO application often offers a button named 'configuration' or 'Settings'. Click it to open the ASIO Device Setup.

---

<sup>9</sup>Preliminary note: If an ASIO audio application using the SERAPH D8/D8c is already active, you must first ensure, that devices are available for usage. It may be, that the ASIO application already uses all available devices and that thus the playback via a media program is not possible. Deactivate all devices in the ASIO application, which you wish to use for the media playback. A step-by-step procedure of how to do this you will find in the following section 'Using and ASIO music software'. ASIO applications are always using the devices of the SERAPH D8/D8c exclusively.

<sup>10</sup>Preliminary note: If an ASIO audio application or media playback is already using devices of the SERAPH D8/D8c, they are not available any longer and it may thus be, that when starting an ASIO application an error message will occur. It will state, that the 'ASIO SERAPH D8/D8c driver could not be started' or similar. ASIO applications are always using the devices of the SERAPH D8/D8c exclusively.

5. By default all devices of the SERAPH D8/D8c are activated in the 'ASIO Device Setup' and can be used by the software. However you may also disable devices here, in order to use them in a different audio application.
6. For certain audio applications it is necessary to assign the devices to 'busses' or similar in order to actually playback signals using these devices. For questions on this, please consult the manual of the application.

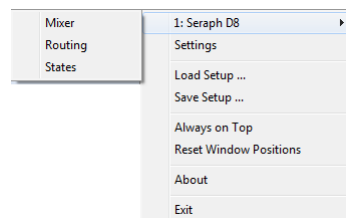
## 4.4 Playback with the SERAPH D8/D8c

Now that the software sends one or more signals to the SERAPH D8/D8c, we must ensure that they will be audible there. There are 2 ways to do this.

### Option 1:

The signal can be made audible directly on a specific output.

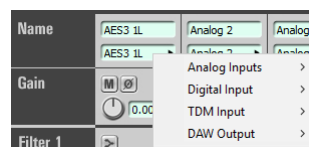
1. Click on the SERAPH D8/D8c manager in the task bar and select 'Mixer'.



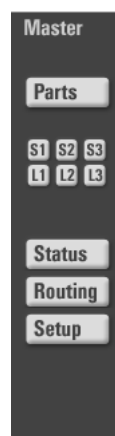
2. For a stereo signal, connect two channels with the link button at the bottom of the 1. channel strip.



3. Choose 'DAW Out 1' from the list at the top of the channel strip for the left channel and 'DAW Out 2' for the right channel.



4. Navigate via the mixer or again through the manager icon in the taskbar to the 'routing'.



5. In the section named 'OUTPUT' choose the desired output for playback. For a stereo signal connect two channels with the link button at the bottom of the first of the two channel strips.



6. From the device selection list choose 'DAW Out 1' for the left channel and 'DAW Out 2' for the right channel.



## Option 2:





The signal may be mixed to other signals (of other applications) in the mixer of the SERAPH D8/D8c and then made audible as part of a mix sum on a specific output

1. Click on the SERAPH D8/D8c manager in the task bar and select 'Mixer'
2. For a stereo signal connect two channels with the link button at the bottom of the 1. channel strip.
3. Choose 'DAW Out 1' from the list at the top of the channel strip for the left channel and 'DAW Out 2' for the right channel. Turn the pan control for channel 1 to the far left and for channel 2 to the far right.
4. The signal appears on the master sum of the mixer.
5. Navigate via the mixer or again through the manager icon in the taskbar to the 'routing'.
6. In the section named 'OUTPUT' select the desired output for playback. For a stereo signal connect two channels with the link button at the bottom of the 1. channel strip.
7. From the device selection list choose 'Master L' for the left channel and 'Master R' for the right channel

As soon as the playback signal is in the Mixer of the SERAPH D8/D8c you can use e.g. high quality EQs to manipulate the sound. The calculation of these EQs is done by the BEAST in the SERAPH D8/D8c and therefore does not use any resources of your computer (except for some electrical power).



## 4.5 Editing the Sound of Signals

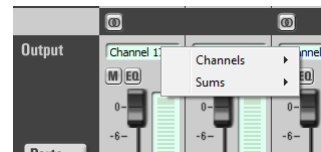
This is how you do it:

1. Choose the desired EQ, and activate it by clicking on one of the icons. Available are:
  - ✓ 1x Low Shelf for processing the lower frequency band 
  - ✓ 2x peak for discreet interventions to specific frequencies/frequency ranges mostly in the middle spectrum 
  - ✓ 1x High Shelf for processing the upper frequency band 
2. With the control next to the display that shows an 'f', set the desired frequency or bandwidth on which or from where on the equalizer should become active<sup>11</sup>.
3. With the control next to the display that shows a 'G', set the desired boost or cut of that frequency or frequency band<sup>12</sup>.
4. With the control next to the display that shows a 'Q', set the desired slope of the EQ. For a peak EQ, it determines how wide the modified frequency band will be (low values result in a broad band). For a shelf EQ it determines on how many octaves a reduction or increase is to become active (low values result in a large number of octaves - that means, a more gradual manipulation)
5. If the signal is to be made audibly directly on a specific output, you need to activate the 'EQ' button for this output. If the signal is part of a mix sum (e.g. the master output), the EQ button in the 'master' section of this channel in the mixer must be activated. 

## 4.6 Setting up a separate stereo headphone mix for a musician

Suppose you are preparing a recording session and want the musicians to be able to listen to themselves - but independent in all sound and volume aspects from the main mix that you hear in the studio. This is how you do it:

1. In the output section of the routing combine the 2 outputs to which the headphones or the headphone amplifier are connected using the link button at the lower end of the first of the two channel strips. 
2. Choose 'HP L' as source for the first output and 'HP R' for the second output<sup>13</sup>.
3. In the mixer channel containing the playback signal, activate the 'Pre' switch near the knob 'HP'. 
4. Slowly turn the knob 'HP', so the signal of the channel appears at the outputs of SERAPH D8/D8c and thus on the headphones.



<sup>11</sup>You may also use the numerical input field to enter values via the computer keyboard. See chapter: 'Operation of mixer and routing'.

<sup>12</sup>For the low shelf EQ the frequencies below the chosen value are being edited, for the high shelf, the frequencies above will be manipulated.

<sup>13</sup>'HP L' means headphones left and 'HP R' headphones right.



- Now you can change the monitor volume or put channels in solo mode, without affecting the headphones. If desired, you can make the EQs audible also on the headphones. To do this simply activate the EQ switch for 'HP L'.

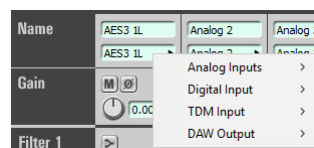
## 4.7 Feeding an external effects device

Suppose you want to add an effect to a playback signal in the way as it is done with professional mixing consoles - partially and depending on the current channel volume. This is how you do it:

- In the routing choose 'AUX 1' for one of the outputs.



- Connect the input of the effects device to this output. Also connect the output of the effects device to an input of the SERAPH D8/D8c.
- In the mixer channel strip containing the playback signal disable, if necessary, the 'Pre' switch for 'Aux 1'.
- Slowly turning up the 'Aux 1' knob, the signal of the channel appears on the selected output of the SERAPH D8/D8c and thus at the input of your effect unit.
- Now for one of the mixer channels, choose the input, to which the effect unit is connected.



- For a stereo signal use 2 adjacent channels and connect them via the link button at the bottom of the first channel strip.
- The playback signal and the proportional effects signal can now be mixed on e.g. the master sum. Note that for the channel with the effect return signal you should not turn up 'Aux 1', otherwise a feedback is created.

In the same way you can make the musicians headphone mix from the previous example more pleasant. You could refine the input signal with e.g. a reverb effect. Leave 'Aux 1' in the 'Pre' mode, and open up 'HP' control for the channels in which the signal from the effects device arrives. Here, too, the 'Pre' button needs to be enabled in order for the reverb to appear constantly on the headphones and not be accidentally influenced by the studio main mix.

## 5 Let's start: Recording

In this chapter you will learn how to

- ✓ Record a signal with the SERAPH D8/D8c
- ✓ Record mixes of signals or individual signals from other software applications

### 5.1 Introduction

In a recording studio there are a lot of cables going from the console to the tape machine in order to play back previously recorded signals. In the same way you can think of the SERAPH D8/D8c being connected by many (virtual) wires to the audio software (the sequencer, etc.). With each of these cables, in Windows<sup>TM</sup> operating systems called 'device', two audio signals are transported. In total there are 16 devices available, which transport each two signals to the application using a specific driver interface. The 'driver interface' is like the type of audio cable used for the transmission of the signals. For media players Windows<sup>TM</sup> DirectSound is the most often used interface, while multi-channel music programs (sequencer etc.) make use of the ASIO interface. The following is an explanation how to use each, for recording with the SERAPH D8/D8c.

### 5.2 Using a media playback program<sup>14</sup>

#### Windows<sup>TM</sup>10

1. Within Windows, select < Start > < Settings > < System >
2. In the tab < Sound > for 'Sound Recording - Default device' select 'SERAPH D8/D8c 1-2'

#### Windows<sup>TM</sup>Vista/7

1. Within Windows<sup>TM</sup> select < Start > < Control Panel > < Hardware and Sound > < Sound >
2. In the tab < Recording > select the device 'DAW In 1-2'
3. In the lower part of the window activate 'Set Default'

### 5.3 Using an ASIO (multi-channel) music software<sup>15</sup>

1. Start the ASIO audio application
2. Open the audio settings of the software
3. Select the 'ASIO SERAPH D8/D8c' driver
4. Near the selection for the ASIO driver the ASIO application often offers a button named 'configuration' or 'Settings'. Click it to open the ASIO Device Setup.

---

<sup>14</sup>Preliminary note: If an ASIO audio application using the SERAPH D8/D8c is already active, you must first ensure, that devices are available for usage. It may be, that the ASIO application already uses all available devices and that thus the playback via a media program is not possible. Deactivate all devices in the ASIO application, which you wish to use for the media playback. A step-by-step procedure of how to do this you will find in the following section 'Using and ASIO music software'. ASIO applications are always using the devices of the SERAPH D8/D8c exclusively.

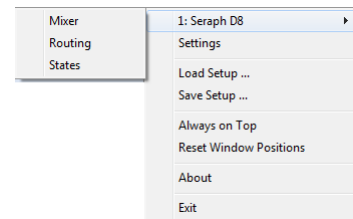
<sup>15</sup>Preliminary note: If an ASIO audio application or media playback is already using devices of the SERAPH D8/D8c, they are not available any longer and it may thus be that when starting an ASIO application an error message will occur. It will state, that the 'ASIO SERAPH D8/D8c driver could not be started' or similar. ASIO applications are always using the devices of the SERAPH D8/D8c exclusively.


5. By default all devices of the SERAPH D8/D8c are activated in the 'ASIO Device Setup' and can be used by the software. However you may also disable devices here, in order to use them in a different audio application.
6. For certain audio applications it is necessary to assign the devices to 'busses' or similar in order to actually playback signals using these devices. For questions on this, please consult the manual of the application.

## 5.4 Assignment in the SERAPH D8/D8c routing

In order for a specific signal to appear in the audio application with the device 'SERAPH D8/D8c 1-2' the proper setting has to be done in the routing of the SERAPH D8/D8c.

1. Click on the SERAPH D8/D8c Manager in the task bar and select 'Routing'.



2. For 'DAW In 1' and 'DAW In 2' select the desired recording signals from the mixer (input signals or mix signals).
3. Connect the two channels with the link button at the bottom of the 1st channel trip. 
4. Adjust the recording level using the knob so that the red LED never lights up. This must always be done if a signal is to be recorded, which was edited with the filter functions of the mixer.

## 6 The SERAPH D8/D8c in Detail: Mixing and Routing

In this chapter you will learn

- ✓ To understand in detail the signal flow of the BEAST
- ✓ Operating the Mixer and the Routing via mouse/keyboard
- ✓ all function of all controls of Mixer and Routing
- ✓ Saving setups and snapshots for Total Recall

### 6.1 Introduction

The SERAPH D8/D8c is more than 'just' a sound card. It features a full-scale mixing console (mixer) and a multi-functional Patchbay (Routing) - called BEAST. The BEAST is integrated<sup>16</sup> in the hardware of the SERAPH D8/D8c thus avoiding any additional processing load for the host computer and guaranteeing a nearly latency-free signal processing. It is controlled by a software that was installed on your computer along with the driver. In the Windows<sup>TM</sup> taskbar you can find the symbol for the SERAPH D8/D8c. With a simple mouse click on it, a context menu is opened. Select 'Mixer' and 'Routing'. If several SERAPH D8/D8c are installed, all entries are displayed according to their number with 'nr. 1', 'nr. 2', etc.

All signals fed to the SERAPH D8/D8c either through connected external cables or signals from a software of the computer, and any signals that are to be played back with the SERAPH D8/D8c pass at some point the mixer and thus the routing. You can imagine this as follows:

1. A big multi-core with 32 cables passes from the operating system (one or more audio applications on the computer) to the mixer of the SERAPH D8/D8c. These 32 playback signals of the multi core are called 'DAW Out 1' to 'DAW Out 32'.
2. From the routing of the SERAPH D8/D8c to the operating system of the computer there is another multi-core with 32 cables. These 32 recording signals, we call 'DAW In 1' to 'DAW In 32'.
3. Furthermore, in the mixer all signals of all physical inputs are available. These signals of the 16 digital inputs we therefore call 'INPUT 1' to 'INPUT 16'. The signals of the TDM SyncBus are available as 'TDM 1' to 'TDM 8'.
4. Signals leaving the SERAPH D8/D8c by a routing to a specific physical output we call 'OUTPUT'. The SERAPH D8/D8c has 24 outputs: 16 signals via digital outputs and 8 signals via the TDM bus.

In the chapters 'The Mixer in Detail' and 'The Routing in detail' you can find out how all the signals can be processed and managed.

### 6.2 Operation of Mixer and Routing

#### Operation with keyboard and mouse

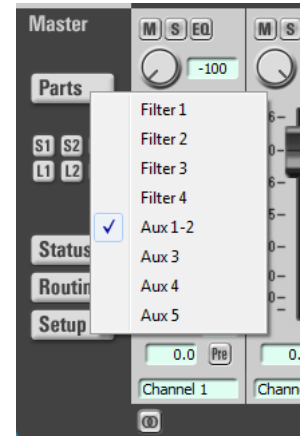
All elements of the mixer and the routing may be operated or moved by the computer mouse. Knobs are opened/closed by circular movement of the mouse. The further the mouse is from the center of the knob the finer the adjustment of the values will be. Alternatively the mouse wheel can be used. While holding the <Ctrl>-key simultaneously, a fine adjustment can be achieved. Holding the <shift>-key will coarse through the parameter. After double-clicking a numeric field, the value of a knob may also be entered in dB via the computer keyboard. The entry is confirmed with the Enter key.

---

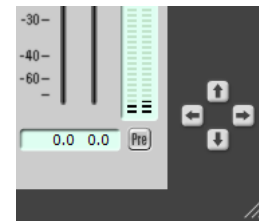
<sup>16</sup>Proper security measures were undertaken to keep it this way.

## 6.3 View options

In order to change the look of the mixer, single rows of control elements may be shown or hidden in the 'Parts' section. This applies for rows 1-4 of the filter as well as all Aux-knobs.



Additionally for mixer and routing the window may be changed in horizontal size. This happens in segments. Via the direction arrows in the right lower corner of the mixer or the routing the displayed section may be switched.



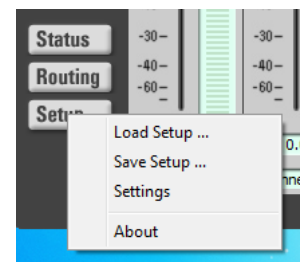
All these functions are very useful for e.g. saving precious space on the computer screen, but also if you set up special configurations with the knobs and wish to inhibit accidental changes by intentionally hiding them. If several SERAPH D8/D8c are installed, the selection menu in the upper frame of the window allows calling up the corresponding instance.



The lock symbol in the upper right of the window inhibits coverage by other windows. Thereby mixer or routing will always be in the foreground and visible.



In the lower left area there are three more function switches. 'Setup' opens up a context menu that is equivalent to the menu opened from SERAPH D8/D8c symbol in the task bar. This again allows for fast access to important functions and windows of the SERAPH D8/D8c sound system.



'Routing' calls up the routing window. From there again you can switch quickly to the mixer panel window via the 'mixer' button. 'Status' opens the clock status panel.

## 6.4 Snapshots

Once a visual configuration was made, it may be saved along with the current mixer settings in one of up to 3 'snapshots'. To achieve this, click 'S1' to 'S3'. If a snapshot is to be recalled, click on the corresponding 'L1' to 'L3' button. All snapshots are saved along with a setup.



## 6.5 Setups

As opposed to snapshots, setups can save and recall all current settings of the SERAPH D8/D8c mixer and routing as well as possible MIDI assignments in one single file.

A click on 'save setup...' opens the Windows<sup>TM</sup> file selection dialog in order to select the path and the name of a setup. Of course, several setups may be saved. By clicking 'load setup...' the Windows<sup>TM</sup> file selection dialog is opened to navigate to the location of a previously saved setup. If you choose a file, click 'open' and all settings of mixer and routing will be deleted and replaced by the settings of this setup/file.

## 6.6 The mixer in detail

### General

The Mixer of the SERAPH D8/D8c offers an abundance of functions for mixing and sound manipulation of signals of a software ('DAW Out x') or a physical input ('INPUT x') Thus all signals of the 56 channels may be mixed upon 8 sums<sup>17</sup> and changed in sound by up to 4 filters. The handling and signal flow of this is designed similarly to those of hardware mixing desks. This concerns the possibility to

1. create different mixes for the sound engineer and the musicians (using pre aux mixes)
2. send signals of single channels to external effect devices (using post aux mixes) as well as
3. to solo or to mute signals, as well as changing their phase and to define their position in the stereo mix

Differences of the SERAPH D8/D8c mixers in comparison to hardware mixing desks are the possibility to

1. assign signals in any order and also multiply to the channels of the mixer
2. to save all settings of all knobs in different setups<sup>18</sup>
3. to activate the filters of a channel selectively only on specific mix sums or to have each signal available with or without filter

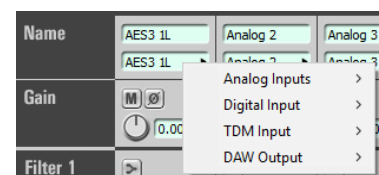
For samplerates up to 96kHz, the Seraph mixer allows for setting up 8 mix sums. 2 Mix sums are the master sum. It serves well as the mains for the sound engineer in the studio. Further 2 mix sum assemble the stereo headphone mix ('HP'). The other 4 sums named 'Aux 1' to 'Aux 4' have been designed for applications like headphone mixes or effect feeds.

For samplerates above 96kHz, there are the stereo master sum and 2 more aux<sup>19</sup>.

### Channel strip

Each channelstrip of the mixer is built up and organized identically. The following explanation of the elements of it is thereby an example for all. Two adjacent channel strips may be connected into a stereo pair using the 'link'-button at the lower end of the mixer. This will link all control elements excluding the channel input selection, the phase switch as well as gain-, aux- and balance knobs.

**NAME** Via the input selection list, the desired signal for this channel strip is chosen. This may be an input signal of the SERAPH D8/D8c ("TDM X" or "AES/EBU X") or a playback signal of a software ('DAW Out X')<sup>20</sup>. By double clicking the field above, an individual name for the signal may be chosen.



<sup>17</sup>From 96kHz upward: 4 sums.

<sup>18</sup>'Total recall' see chapter 'Setups'

<sup>19</sup>Switching the operation modes is done in the settings of the SERAPH D8/D8c manager.

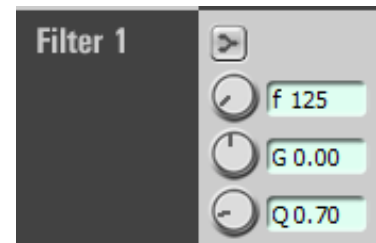
<sup>20</sup>See introduction of the chapter 'The SERAPH D8/D8c in Detail: Mixing and routing'

**GAIN** The knob GAIN or using the input field will define the pre-attenuation of the signal<sup>21</sup>. This change in level will affect all mix sums that this signal is part of, as well as all software applications, recording it.



Furthermore here the whole channel maybe muted by clicking the 'M'. As a consequence, the signal will not appear on any mix sum. Clicking 'phase' will reverse the phase position of the signal.

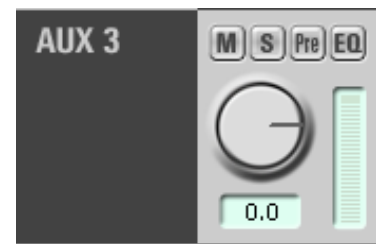
**FILTER** A filter is activated with a click on its icon<sup>22</sup>. In order for its sound manipulation to become active, the 'EQ' button of either the mix sum or the desired output has to be activated in the routing. This can be done separately for single channels, aux- or master sums.



Each filter is full-parametric. That means, that it includes a graphical and numerical entry of the filter frequency 'freq' for setting the point of action for the filter, a knob 'Q' for setting the octave rolloff and a knob 'gain' for defining the amplification or attenuation (boost or cut) of the selected frequency. Entering the filter frequency with the computer keyboard may be done in different formats. Possible entries are e.g. '7400', '7,4k' and '7.4k' for 7400Hz.

On each channel 4 filters may be activated. These are 1x Low Shelf, 2x Peak and 1x high shelf<sup>23</sup>.

**AUX** The knob or the numerical input may be used to set the volume of a channel on the specific mix sum. If the volume is to be independent of the position of the fader at the end of a channel strip (headphone mode), the 'PRE' button needs to be active. If the volume is supposed to change according to the position of the fader (effect feed), the 'PRE' button needs to be inactive. If the signal is to appear singularly on an aux sum, 'SOLO' must be switched on. A click on 'EQ' will make changes in sound as set up with the filters become audible on this mix sum.



By default 'HP L' and 'HP R' are coupled into a stereo pair 'HP'. In the signal flow, the signal for HP is taken behind the PAN knob<sup>24</sup>. Thereby a stereo signal will imaged correctly on a pair of headphones.

<sup>21</sup>This Gain is a digital one – an analog clipping of a preamp prior in the signal chain can not be improved with it!

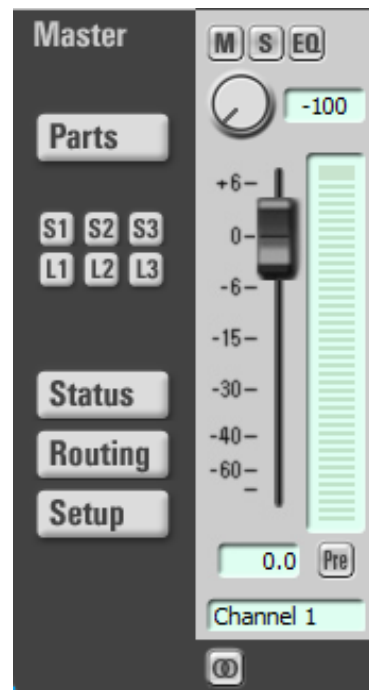
<sup>22</sup>The calculation of the filter is done in the hardware of the card and does not use any resources of the host computer.

<sup>23</sup>Please pay attention to the fact, that setting up the filter gain may affect the level of the signal. This is why it is important to adjust the level of the signals of the affected channels in the routing.

<sup>24</sup>This implies stereo signals. For connected channel strips, turn channel one to far left (Signal goes only to HP L) and channel two to the far right (Signal goes to HP R, only)

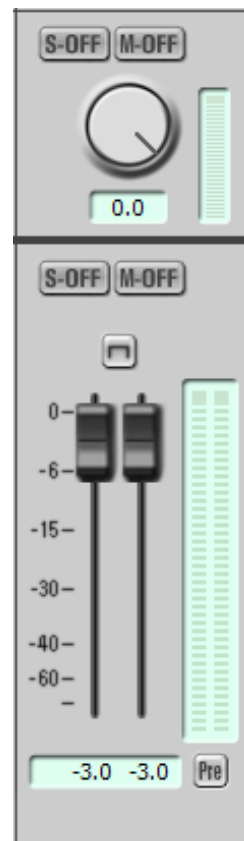


**MASTER** The fader or the numerical input below it may set up the volume of the signal of this channel strip on the master sum. The knob 'PAN' sets the ratio of the signal between left and the right part of the master sum. If a signal is to appear singularly on the master sum, the 'SOLO' button needs to be active. Clicking 'EQ' will make the settings of the EQ become active for this channel on the master sum. The 'PRE' button allows a display of the level of the signal before the effect of gain, filter or fader.



## Master channel

The master channel serves for controlling the volume of all mix sums. Thus there is a knob for each aux sum and a left and right fader for the master sum. The 'S-off' button deactivates the solo state for every channel of the corresponding mix sum. The 'M-off' button deactivates the mute status for all channels of the corresponding mix sum. The 'PRE' button allows a display of the level before the effect of the fader. In the lower-most field you may enter an individual name for that channel. This name will appear also in the selection lists of the routing.



## 6.7 The routing in detail

### General

The routing of the SERAPH D8/D8c is a complex digital patchbay. All signals of the channels of the mixer as well as the mix sums ('master', 'HP' and 'Aux x') may be played back on any physical output (via the 'output' section) or may be recorded within the same computer system (via the 'DAW Input' section). Additionally for every single channel you may define, if the changes in sound by the filter may become active or not on the routed output<sup>25</sup>.

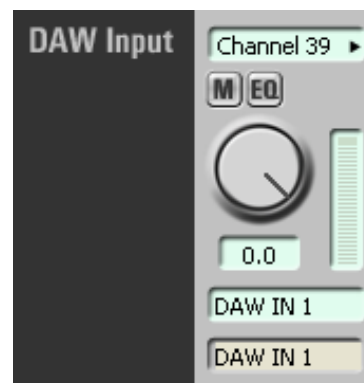
### DAW In section

The SERAPH D8/D8c offers 32 channels for recording. You can find these labeled as 'DAW In 1' up to 'DAW In 32' in the 'DAW Input'-section. To an audio application they are available in couples of two in so called 'devices' with the names 'SERAPH D8/D8c 1-2' up to 'SERAPH D8/D8c 31-32' or "DAW IN 1-2" up to "DAW IN 31-32". Thus the SERAPH D8/D8c offers 16 devices to an application<sup>26</sup>.

Now, which signal of the mixer lands up on which device in the audio application, can be defined freely via the selection menus. With the 'M' button, a signal can be muted. In this case it will not appear any longer at any audio application. 'EQ' de/activates the filters for this signal, as set up in the channel of the mixer<sup>27</sup>.

Of course double assignments are possible. E.g. a signal could be made available several times to different audio applications once with EQ and once without.

Finally the knob defines the volume for this signal of this device. In position '0,0' no volume or bit manipulation is applied to the signal. Below the knob you may enter a individual name for this signal. Please note: if a signal was edited using the filter functions of the mixer, the level of it may have to be adjusted in the 'DAW Input' section in order to inhibit digital overloads.



<sup>25</sup>For mix sums the 'EQ' switch is without function.

<sup>26</sup>On Windows™ per default, 'DAW In 1' and 'DAW In 2' are device 'SERAPH D8/D8c 1-2' and 'DAW In 3' and 'DAW In 4' are device 'SERAPH D8/D8c 3-4' and so on.

<sup>27</sup>For mix sums the 'EQ' switch is without function

## Output section

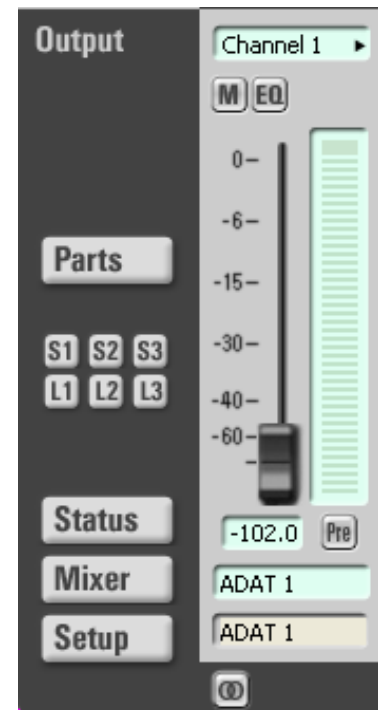
The SERAPH D8/D8c offers 16 physical outputs .

Which signals come out of these outputs may freely be defined using the selection menu

With the 'M' switch, a signal can be muted. In this case it will not appear any longer at any audio application. 'EQ' de/activates the filters for this signal, as set up in the channel of the mixer<sup>2829</sup>. Of course double assignments are possible. E.g. a signal could be made available several times to different audio applications once with EQ and once without. For TDM channels there is an additional 'ON' button, activating the TDM channel when pressed<sup>30</sup>.

Finally, the fader defines the volume for this signal of this device. In position '0,0' no volume or bit manipulation is applied to the signal. Below the fader you may enter a individual name for this signal.

Please note: if a signal was edited using the filter functions of the mixer, the level of it may have to be adjusted in the 'output' section in order to inhibit digital overloads.



<sup>28</sup>For mix sums the 'EQ' switch is without function.

<sup>29</sup>With this a change in sound can be applied for a mix in the mixer, but will not be audible on the corresponding output.

<sup>30</sup>TDM channel may only host one signal at a time. That is why a TDM channel may only be activated for one TDM capable sound system. For a in depth understanding of the TDM SyncBus, please read chapter 'The SERAPH D8/D8c in Detail III: TDM SyncBus'.

## 7 The SERAPH D8/D8c in Detail: System settings

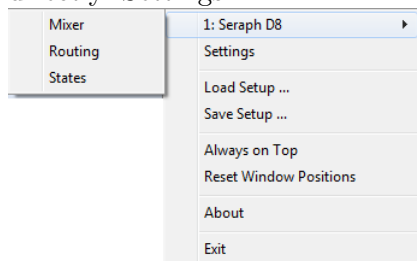
In this chapter you will get to know:

- ✓ the function and meaning of all system settings
- ✓ how to do specific modifications to the ASIO driver

### 7.1 Introduction

Besides the usage as explained in the examples of this manual, there are of course other possibilities to make the SERAPH D8/D8c functionality fit to the specific needs of the daily work in the studio. The following chapter explains all system settings of the SERAPH D8/D8c providing example configurations and notes on their meaning.

On the Windows™ task bar, you can find the symbol for the SERAPH D8/D8c manager. It is opened with a single click allowing to call up "SERAPH D8/D8c" and then 'Clock Status' or directly 'Settings'.



If several SERAPH D8/D8c are installed, all the entries will appear in the corresponding amount, numbered with '1: SERAPH D8/D8c', '2:SERAPH D8/D8c' and so on.

### 7.2 Clock Status Panel

AES IN 1	AES IN 2	AES IN 3	AES IN 4	AES IN 5	AES IN 6	AES IN 7	AES IN 8	WC / SC	SyncBus	Intern
Audio 48.0 kHz	Audio 48.0 kHz	Audio 48.0 kHz	Audio 48.0 kHz	Audio 48.0 kHz	Audio 48.0 kHz	Audio 48.0 kHz	Audio 48.0 kHz	WCx1 Error	Master 48.0 kHz	48.0 kHz
SRC active	SRC active	SRC active	SRC active	SRC active	SRC active	SRC active	SRC active	Frequenz IN 0.0 kHz		

#### General

The SERAPH D8/D8c clock status panel offers fast information about samplersates, samplerate converters and clock sources of every installed SERAPH D8/D8c. In the head of the window the clock status panel for each installed SERAPH D8/D8c can be chosen from the selection menu. Via the lock-symbol in the upper right of the window, coverage by other windows may be inhibited. This way the clock status panel will always be visible in the foreground.

#### Clock Status and samplerate

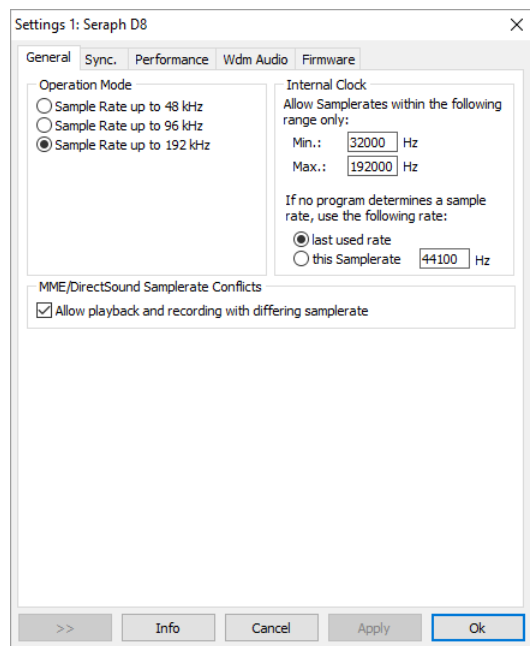
In the first line of the panel, you can read which samplerate is present on each digital input (AES/EBU 1 to 8, WordClock or SyncBus) or which samplerate is set up for the internal clock. The green LED left of it shows, if the clock of this source was detected correctly. In this case the samplerate in kHz will displayed. If no clock could be retrieved, the red LED will light up. Additionally it will read 'error'. If in the settings of the SERAPH D8/D8c, this connector was chosen as clock source, this section of the table will be highlighted in red. The connector, whose

clock is actually used, will be highlighted in white. If the SERAPH D8/D8c is configured to be SyncBus master, 'MASTER' will indicate this in the column 'SyncBus'.

The second line of the panel reports the status of the samplerate converters. These may be inactive (grey), active and functional (green) or erroneous (red). The latest shows, that even though the samplerate converter is switched on, there is either no signal present on this input or the samplerate of this input differs by the factor 1:16 or 16:1 to the samplerate currently active for the SERAPH D8/D8c.

## 7.3 Settings

### General and Sync



**Operation Mode** The SERAPH D8/D8c may be operated in 3 different operation modes, chosen here. In 192 kHz mode, the number of mixing sums is reduced to 4. Consequently, there are 2 aux-sums ('Aux 1' and 'Aux 2') besides the main mixing sum.

**Internal Clock** In this section the operation limits of the SERAPH D8/D8c may be defined using the 'min' and 'max' entry fields.

If no application is using the SERAPH D8/D8c, you may define with which samplerate the sound system is supposed to work in the field 'This samplerate'<sup>31</sup>.

By selecting 'the last used', the SERAPH D8/D8c will keep the samplerate that was used last for the next recording or playback via an audio application

**MME/DirectSound Samplerate Conflicts** Activating this option the driver software will allow recordings and playbacks with deviating samplerates. Consequently an audio application will not display a warning. Instead, if you deactivate this option, an audio application will report a message, which in turn can cause the malfunction of some poorly programmed audio application (and this is the reason we introduced this option, because we believe SERAPH D8/D8c users know how to handle clock and samplerate and prefer not having to deal with such audio applications).

What is behind this? When recording or playing back audio with MME or DirectSound,

<sup>31</sup>If e.g. the SERAPH D8/D8c is to be used as a pure mixing desk. When using an audio application, the samplerate is defined by the settings of the application or the playback file.

Windows™ systems will always use the samplerate defined in the properties of the audio device, setup in the windows control panel - Even if the application requests a different samplerate. In such case a resampling will take place. The driver software is unable to set the samplerate requested by Windows in these situations:

1. The SERAPH D8/D8c is synchronized by an external clock whose samplerate differs from the requested samplerate.
2. The SERAPH D8/D8c is already used by other applications with a different samplerate.

Please keep in mind that it is thereby potentially possible to cause erroneous playback and recording, when the activating the above option.

## Synchronization

Working with digital audio signals, a digital clock is always required. The following settings define, which source is to be used for retrieving the clock for the SERAPH D8/D8c <sup>32</sup>.

The SERAPH D8/D8c may be operated in three clock-modes alternatively.

**The SERAPH D8/D8c as clock-master** If 'internal clock' is active, the SERAPH D8/D8c generates the clock itself. Other devices may receive this clock via the AES/EBU outputs, SyncBus or the Wordclock output .

**The SERAPH D8/D8c as clock-slave** If 'SyncBus clock' is selected the clock on the connector of the SyncBus will be used<sup>33</sup>. Equally, the SERAPH D8/D8c can be operated in sync to clock present on the AES/EBU inputs or the Wordclock input .

**The SERAPH D8/D8c as SyncBus Master** If you own 2 or more MARIAN PCI(e) sound systems and installed and connected them with a SyncBus cable, you may define via the option 'card is SyncBus master' which system supplies the digital clock for the compound. For the SyncBus master card, any clock-source may be chosen.

All other MARIAN PCI sound systems will run synchronously to the master card, if their clock source is set to be 'SyncBus'<sup>34</sup>.

**Hardware samplerate Converter** This section defines for every input, whether or not its samplerate converter shall activate it self automatically ('activate automatically') This should be done, if the signals of this input are to be used, without having to synchronize onto them. Select 'activate never' only, if you are sure, that the connected devices are synced correctly to the SERAPH D8/D8c.

**WordClock input** If the SERAPH D8/D8c is the last link in a WordClock chain, the termination of its WordClock input may be activated here.

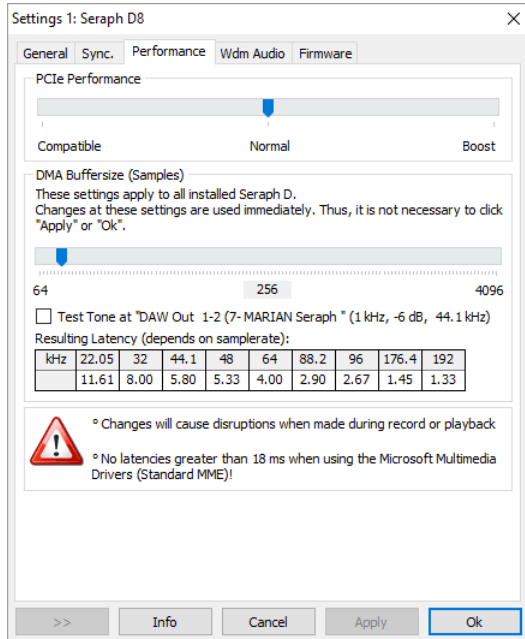
---

<sup>32</sup>Attention: If no clock is available or a wrong clock setup was done, playback errors or malfunction of the system may occur. Please also note the hints in the appendix about the special aspects of the clock.

<sup>33</sup>The option 'Card is SyncBus Master' must not be active in this case!

<sup>34</sup>If a sound system runs in sync to the SyncBus clock can easily be checked with the status panel: The column 'SyncBus' has to be white. The clock master of the compound is recognizable by the 'MASTER' in the status panel.

## Performance

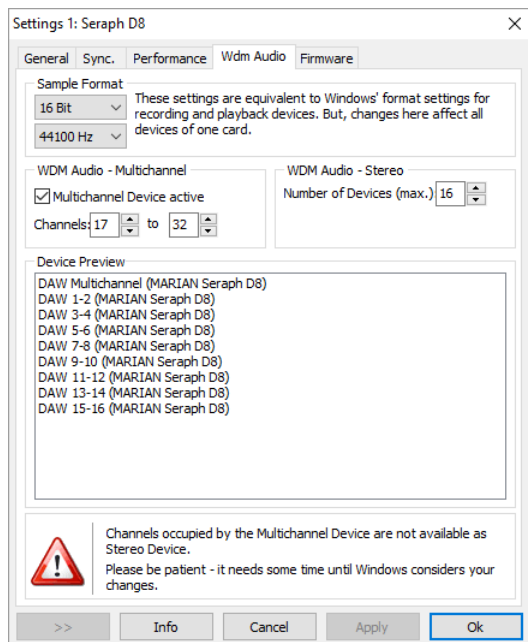


**PCIe Performance** For best results, we recommend the "compatible" option, if the PCIe slot used is connected with the CPU directly. (e.g. 16x slots or small mainboards with just one or two PCIe slots) We recommend the "boost" option for all other, standard cases, where the PCIe slot is connected with a PCIe host controller.

**DMA Buffer Size** Via the upper slider you can adjust the minimal latency of the SERAPH D8/D8c. Here, the size of the buffer, shown in samples, is changed. Operating the soundcard with e.g. 44.1 kHz, 88 samples will result in a latency of around 2 ms. For 88,2 kHz, this number of samples would mean a latency of 1 ms. The chart 'resulting latency' shows these connections for some important standard samplerates.

By activating 'Play test tone at SERAPH D8/D8c 1-2' a sine tone is played back at this device. Monitor this signal and adjust the value for the DMA buffer to be as small as possible, but without receiving distortions when playing back the sine wave.

## WDM



This settings window allows for changes that apply only to the WDM driver part of the SERAPH D8/D8c. ASIO and other driver interfaces remain unaffected.

**Sample Format** Usually, the samplerate and bit depth of an audio device (e.g. SERAPH D8/D8c 1-2; SERAPH D8/D8c 3-4 and so forth) are defined in the windows control panel, for each device separately. Given, that the SERAPH D8/D8c offers 32 devices (16 play and 16 record), changing all of them to a specific format may take a while. Thus, we have introduced a quick and easy way to change the format for ALL devices of the SERAPH D8/D8c.

**WDM Audio Multichannel** The SERAPH D8/D8c offers one multichannel audio device, that can be used with multichannel audio/video applications. This option defines, which mono-audio devices are included in this multichannel device. Example: Selecting channels 1 to 8, will create a multichannel device with 8 channels. Activating a multichannel audio device, will make the included mono audio devices unavailable for use as stereo device.

**WDM Audio Stereo** This option allows to limit the amount of stereo audio devices visible to windows and all WDM compatible audio applications. This is useful to enhance the overview in an application, if you only work with a couple of all of the 16 available stereo devices.

**Device Preview** In order to keep an overview of the current configuration of all devices, whether included in a multichannel or stereo device, you can see a preview of all of them, the same way they will appear in the windows control panel or any WDM compatible application.

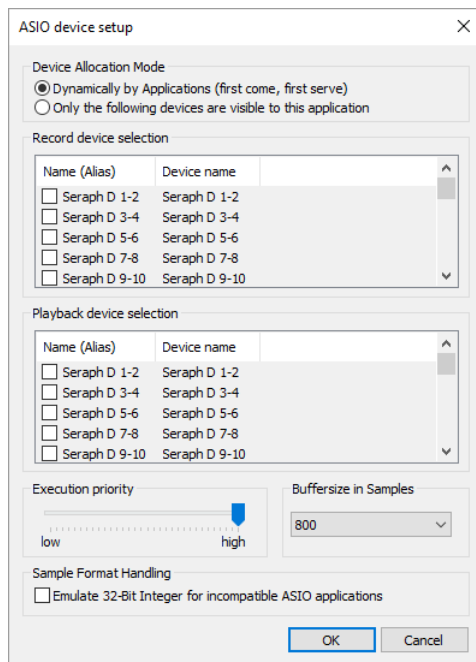
## Firmware

This section you may ignore. Also it is not necessary to manually perform firmware updates, since this is done automatically along with a driver update.

Note: This section may become relevant, if, after contacting the MARIAN Support Service, it is advised to perform a manual firmware update – e.g. for diagnostic purposes.



## 7.4 ASIO Device Setup



In the field of professional music production on the PC, the ASIO interface has established itself as a standard. The ASIO device setup offers important setup features for using the SERAPH D8/D8c with an ASIO interface. It is opened from within the audio application that supports the ASIO standard. Mostly there is a button called 'control panel' or 'setup' near the selection field for the ASIO driver. Clicking it will open the ASIO device setup.

Here you will see all in- and output devices (in the BEAST labeled as 'DAW In x' and 'DAW Out x') which the SERAPH D8/D8c offers. Via default, the ASIO application may use all in- and output devices of the SERAPH D8/D8c, unless a device is already in use by another application.

Selecting 'Only the following devices are visible to this application' will allow you to choose yourself, which device can be used by the application. If an entry is checked, the corresponding device is active and visible to the application.

Clicking an entry in the column 'name (Alias)' will allow you to change the name of this in- or output. This will appear in the same way in the ASIO application. Example: You name 'SERAPH D8/D8c 1-2' to 'guitar' or 'room mic'. Now in the audio application you will always see at first glance which signal comes from where.

On the left lower side of the window you can find the 'execution priority' slider. It can be freely positioned between 'low' and 'high'. In position 'high' the transfer of the audio data between ASIO application and SERAPH D8/D8c will receive the highest priority. This means, that the processor will handle this data preferably.

In position 'low' the calculation of plug in effects will receive the highest priority and the audio data transfer will be dealt with secondarily. On the lower right side of the window you can find a selection menu for 'Buffersize in Samples'. This value defines the latency of the audio data transfer. An example: working with 44.1kHz and setting up 176 samples as buffersize will result in a latency of 4ms. When working with 88.2kHz, the same buffersize will result in a latency of 2ms.

## 8 The SERAPH D8/D8c in Detail: TDM SyncBus

In this chapter you will learn

- ✓ to understand the TDM SyncBus via metaphors
- ✓ to use the TDM SyncBus via examples

### 8.1 Principles of the TDM SyncBus

The TDM SyncBus is a collective transport bus for digital audio- and synchronization signals. With the help of the TDM SyncBus any signal of an audio system featuring the TDM SyncBus may be send out to other MARIAN sound cards with TDM SyncBus.

The principle of operation of the TDM SyncBus may be compared quite well with the pneumatic dispatch or tube system between several office buildings.

Imagine this: Ms. Smith in building 1 sends out a press report on channel 1 of the tube system. It arrives at the distribution central. If Mr. Mayer in the 2. building wishes to read the report, he needs to call for it at the central. He will then receive a copy of it in the inbox of channel 1. The same way as Ms. Smith uses a tube channel to send out a document between buildings, you can use a TDM channel to send out a signal of the SERAPH D8/D8c to the TDM SyncBus via the routing. The same way as Mr. Mayer receives a copy of the document in the inbox, the audio signal of the TDM SyncBus lands up in the input of the mixer of the connected MARIAN TDM system.

This is also possible: Mr. Miller from building 3 may also request the message of Ms. Smith. For this, the distribution central simply copies the document another time and sends it to Mr. Miller.

That means: If more than 2 MARIAN sound cards with TDM SyncBus are installed in a computer, the signals of the TDM channel are available to all the systems as well.

BUT: The capacities of the pneumatic dispatch are limited. E.g. if Mr. Miller building 3 also wishes to send a document, he must not use channel 1, since Ms. Smith is already sending out her documents here. All in all there are 8 channels, that's why Mr. Miller must decide for channel 2 to 8.

For the TDM SyncBus this means: only one signal<sup>35</sup> in one channel but eight signals in total can be distributed simultaneously. That's another way to say that a specific TDM channel may only be active in one routing at a time.

### 8.2 Examples the functionality of the TDM SyncBus

#### Synchronizing other MARIAN sound systems

As explained in 'Let's start I: Basics', all digital systems working together have to be synchronized by one clock. This is what you need to do to synchronize MARIAN sound systems using the TDM SyncBus

1. For the system that is supposed to provide the clock, choose 'Card is SyncBus master' in the settings of that system.
2. For all other systems deactivate the aforementioned option. Choose 'SyncBus' or 'TDM SyncBus' as clock source in
  - (a) The ASIO application when using the ASIO interface
  - (b) In the settings of the sound system when using any other than the ASIO interface

---

<sup>35</sup>'One' signal means 'one source' – of course aux- and other mix signals can be sent.

3. For the SyncBus or TDM SyncBus master system any valid clock source may be chosen. This may be the internal or any external clock<sup>36</sup>.
4. Open the status panel for every system involved and check the settings<sup>37</sup>.
5. If 2 or more TDM SyncBus systems are synchronized, they may also exchange Audio signals via the TDM SyncBus

## **Including signals from other MARIAN sound systems in the BEAST**

With the help of the TDM SyncBus up to 8 signals of an additional sound system may be integrated in the mixer of the SERAPH D8/D8c. This is how you do it:

1. Synchronize all participating MARIAN TDM SyncBus systems as described in the previous chapter.
2. Open the routing of the system from which a signal is to be sent.
3. For any TDM channel in the output section, choose the desired signal from the selection menu.
4. Activate the "ON" button of that TDM channel
5. The signal is now available in all connected MARIAN Soundsystems via the TDM SyncBus

---

<sup>36</sup>e.g. from AES/EBU, Wordclock or SyncBus

<sup>37</sup>A description of the status panel you can find in the chapter 'The SERAPH D8/D8c in Detail II: System Settings'

## 9 Appendix

### 9.1 Service and Support

#### Warranty

Each SERAPH D8/D8c leaving us is put under extensive functionality checks. We allow full 5 years of limited warranty. A copy of the receipt or bill serves as proof of purchase. If there is a deficiency occurring during the time of warranty, you can exchange the unit at your dealer. Damages originating in inappropriate handling or false operation are excluded from warranty. You can still send the unit in to us for repair after the warranty has expired. You can decide to have it repaired, after receiving a calculation of the approximate repair costs. For this, please get in contact with our support service.

#### Contact

If you have any questions or problems when installing or operating the SERAPH D8/D8c, please proceed as follows:

1. Make sure, the newest driver is installed. The current driver files can be found on: [www.MARIAN.de/en/downloads](http://www.MARIAN.de/en/downloads)
2. If still any questions remain, you can contact us via the internet using our support form at: [www.MARIAN.de/en/support](http://www.MARIAN.de/en/support)
3. Or talk to us personally. Dial: +49 341 589 32 22

Interesting news, information as well as information about our products and authorized dealers can be found on [www.MARIAN.de](http://www.MARIAN.de).

## 9.2 Glossary

**ASIO** ASIO stands for 'Audio Streaming Input Output' and is a driver interface for soundcards developed by the company Steinberg. With ASIO very small latency times can be achieved. The ASIO driver is not multi-client capable. That means, different audio applications may not use the same audio device simultaneously.

**Audio Device** In the field of digital audio processing, this mostly names an input or output of an audio system, the way it appears in an audio application.

**Aux** In the audio world 'Aux' or 'Auxiliary' names an additional input or output. That means a physical input or output or a mix signal besides the main mix signal.

**Buffersize/Buffer** When transporting audio data within a computer (e.g. recording or playing back a signal), they are chopped in equal blocks called 'buffer'. That means, they are a certain time frame out of a complete signal. The number and size of the buffer defines the delay time (latency).

**DAW** DAW is the abbreviation for 'Digital Audio Workstation' and names a software application installed on a computer, for numerous task of sound editing or a system consisting of one or several components for processing audio signals. E.g. a computer with software, appropriate interfaces and connections and additional control or input devices.

**Direct Sound/Direct X** DirectX is a Windows<sup>TM</sup>system-software, which allows hardware manufacturers, to support different input-, graphic- or sound functions with their hardware and thereby accelerate it. DirectSound is a part of DirectX. A DirectSound driver creates less CPU load and enables faster latency times than a standard MME driver.

**Driver** A driver is a package of software, consisting of a couple of single programs or a part of a software, which ensures communication between a hardware device and other drivers or software applications on standardized level. Certain interfaces are used doing this.

**DSP** DSP stands for 'Digital Signal Processing'. Most times this names an electrical component, processing audio signals digitally. It calculates, for example, the sum of two signals or an effect into an audio signal.

**GSIF** GSIF stands for 'GigaStudio InterFace' and is a driver interface for soundcards developed by the company TASCAM. GSIF is mainly used for the Tascam software 'Giga Sampler' and 'GigaStudio'.

**Interface** Interface names a part of a device or software, which other devices or software applications can communicate and possibly exchange data with.

**Latency** Latency is, in the field of digital audio signal processing, another word for 'delay time'. Example: if you connect a microphone signal to the SERAPH D8/D8c, it takes some time until it comes from the SERAPH D8/D8c input all the way to an audio application (e.g. your recording software). Similar, it needs some time, until a playback signal of an audio application actually can be heard at the SERAPH D8/D8c. This time is called latency and is specified in milliseconds.

**Metering** Or level metering. Means the visualization of volume relations of an audio signal.

**MIDI** MIDI stands for 'Musical instrument digital Interface' and is a standard of transmitting control signals for sound expanders. It transmits e.g. note information, which request a sound expander to play certain notes.

**MME** Is an abbreviation for 'Microsoft Multimedia Extension'. It is a driver interface for the audio transport on Windows Systems.

**Pitch** In the field of audio techniques, this means the difference of a samplerate from a pre-defined one. If several digital audio devices are present, this fluctuation of samplerate has to be supported by all devices.

**Routing** This word describes which paths on switches audio signals and clock signals take within a system.

**Sample rate** In order to convert analog audio signals into digital audio data, they are chopped into a time grid. In this rate, the volume of the audio signal is measure, e.g. 44100 times a second. The smaller the grid, the better is the resulting audio quality.

**S/PDIF** S/PDIF stands for 'Sony Philips Digital Interface' and was developed by the companies Sony and Philips. With it a digital audio signal is transported either with a light conductor cable (TOSLINK) or a RCA coaxial cable.

**WDM** WDM stands for 'Windows<sup>TM</sup>Driver Model' and is an extensive driver model developed by the company Microsoft. Other drivers can build upon this. A derivation of it is used, to handle digital audio data within the computer – see Direct X.

**WordClock** Is the name for a synchronization signal for digital audio systems. It ensures, for all devices connected, to work with the identical samplerate (e.g. 44.1 kHz). Most digital audio formats transmit a clock besides the audio information. E.g. S/PDIF, AES/EBU or ADAT. If no synchronization is possible via the audio connection (e.g. TDIF), digital audio devices have to be supplied with the WordClock signal. Please don't confuse this with MIDI clock or time code synchronization (e.g. SMTPE).

## 9.3 Special Notes

The following sections include remarks on special aspects of clock and samplerate that result from the specifics of Windows<sup>TM</sup> operating systems. The notes are of a general nature and valid in principle for other sound systems as well. For more transparency, though, we are referring to the SERAPH D8/D8c.

### 9.3.1 Clock settings when using ASIO

Working with an audio application using the ASIO interface of the SERAPH D8/D8c, all clock settings will be managed by that program and overwrite the current settings in the manager! Which clock source is used, can still be read in the clock settings within the SERAPH D8/D8c manager. The manual of the application should give report about which clock source the audio application chooses under which circumstance. If the audio application is closed (communication with the ASIO driver is terminated), all previous clock settings are being reset.

### 9.3.2 Samplerate on record/playback

Please note, that a certain samplerate for the SERAPH D8/D8c can only be set, if the clock source used is the internal clock. If synchronized externally (Clock is being read from AES/EBU, Wordclock or SyncBus ), the samplerate will be defined by the connected devices.

Windows<sup>TM</sup>Vista only:

On Windows<sup>TM</sup>Vista a certain samplerate is no longer reported to the sound card, if the audio application is not using the ASIO interface or WSAPI. The samplerate set up in the advanced settings of an audio device in the Windows<sup>TM</sup>control panel is used instead. This leads to the following:

1. If the desired samplerate of an audio application is not equal to the current samplerate, a samplerate conversion with possibly an audible loss of quality will be the result!
2. When using an audio device of the sound system with the samplerate  $x$  and additionally attempting to use another device but with a samplerate  $y$ , an error message will appear, since the soundcard may only be used with one samplerate at a time. In this case no resampling (rate conversion) is done!
3. In order to operate several devices with a certain samplerate, this samplerate has to be set up in the advanced settings of an audio device in the Windows<sup>TM</sup>control panel for each device separately. As concluded from 2 – no device of the sound system should be in use, or else a change will be rejected!

### 9.3.3 Different samplerates on record/playback via ASIO

Example: You already work with certain inputs or outputs of the SERAPH D8/D8c with a certain samplerate. Now you wish to use other inputs or outputs simultaneously, but with another samplerate. Since the SERAPH D8/D8c can be operated with one samplerate, only, the driver will inhibit the usage of the additional inputs or outputs. The simultaneous operation of the SERAPH D8/D8c with different samplerates is possible using the standard-MME or DirectSound driver, only.

### 9.3.4 Simultaneous playback on one device via ASIO

Example: You are playing back on a certain device (e.g. 'SERAPH D8/D8c 1-2') of the SERAPH D8/D8c. Now you wish to playback another signal of another software application via the same device. The SERAPH D8/D8c driver will inhibit this, except if the simultaneous

playback of several audio programs via the same device happens using the standard-MME or DirectSound drivers.



## 10 Technical Facts

<b>Typ</b>	PCIe Audio Interface, 1 Lane (PCIe 1x), PCI Express Base Specification 1.1, occupies 1 extension slot of the mainboard and two slots in the computer case also compatible with PCIe 4x, 8x, 16x	
<b>Transfer Model</b>	PCIe Busmaster DMA, Direct ASIO Support	
<b>Audio I/O</b>	8 AES/EBU Inputs (16 Channels) 8 AES/EBU Outputs (16 Channels)	
<b>Ports</b>	2 x XLR Adapter Cable Connector; 25-pin D-Sub female 1 x BNC Wordclock / Superclock Input 1 x MWX Connector; 26-pin internally 1 x TDM SyncBus Connector; 14-pin internally	
<b>Cables</b>	2 x Adapter Cable XLR/25-pin D-Sub	
<b>Sample Rates</b>	22,05 kHz ... 192 kHz $\pm$ 10% Pitch	
<b>Sample Resolution</b>	AES/EBU Driver/Application	24 Bit physically 8...32 Bit
<b>Clock Sources</b>	1 x Intern 1 x TDM SyncBus 8 x AES Input 1 x WC/SC Input (MWX Version)	
<b>DSP</b>	Mixer Channels DAW In Routing Channels Output Routing Channels	56 32 24
<b>SRC</b>	8 x Input SRC Sample Rate Ration Dynamic Range  THD+N	1: 16 / 16:1 144 dB(A) @ Input -60 dB -140db
<b>Jitter</b>	< 5ns	
<b>Chip Types</b>	SRC4392 (TI)	
<b>Multi-Card Support</b>	Via TDM SyncBus	
<b>Driver Support</b>	Windows <sup>TM</sup> 32/64bit: 2000 <sup>38</sup> /7 and Server 2003/2008/2010with MME, ASIO 2.2 <sup>39</sup> , WASAPI, WDM Audio, DirectSound	
<b>Temperature Range</b>	- 25° C ... +70°	
<b>Operating Temperature</b>	- 25° C ... +60° C	
<b>Power Consumption</b>	+3,3V / 0,7A und +12V /0,4A	
<b>Humidity</b>	max. 70%; non-condensing	
<b>MTBF</b>	20° C ... 40° C: 45000h; -50% /+10° C > 40° C	

<sup>38</sup>only for 32bit Windows<sup>TM</sup>

<sup>39</sup>On 32bit Windows<sup>TM</sup>Version: ASIO 2.1

<b>MWX</b>															
<b>Wordclock Superclock Input</b>	<table border="1"> <tr> <td>1 x BNC</td> <td>0 - 30 MHz</td> </tr> <tr> <td>Frequency Range</td> <td>5 kOhm; 5 kOhm;</td> </tr> <tr> <td>Impedance</td> <td>software controlled termination to 75 Ohm</td> </tr> <tr> <td>Sensitivity</td> <td>1,5 Vss - 5,0 Vss;</td> </tr> <tr> <td>Features</td> <td>DC-Offset free;</td> </tr> <tr> <td></td> <td>Schmitt-triggered;</td> </tr> <tr> <td></td> <td>Overvoltage Protection</td> </tr> </table>	1 x BNC	0 - 30 MHz	Frequency Range	5 kOhm; 5 kOhm;	Impedance	software controlled termination to 75 Ohm	Sensitivity	1,5 Vss - 5,0 Vss;	Features	DC-Offset free;		Schmitt-triggered;		Overvoltage Protection
1 x BNC	0 - 30 MHz														
Frequency Range	5 kOhm; 5 kOhm;														
Impedance	software controlled termination to 75 Ohm														
Sensitivity	1,5 Vss - 5,0 Vss;														
Features	DC-Offset free;														
	Schmitt-triggered;														
	Overvoltage Protection														
<b>Wordclock and Superclock Output</b>	<table border="1"> <tr> <td>1x BNC</td> <td>0 ... 30 MHz</td> </tr> <tr> <td>Frequency Range</td> <td>13 Ohm</td> </tr> <tr> <td>Internal Resistor</td> <td>2,8 Vss at 75 Ohm</td> </tr> <tr> <td>Output Voltage</td> <td></td> </tr> </table>	1x BNC	0 ... 30 MHz	Frequency Range	13 Ohm	Internal Resistor	2,8 Vss at 75 Ohm	Output Voltage							
1x BNC	0 ... 30 MHz														
Frequency Range	13 Ohm														
Internal Resistor	2,8 Vss at 75 Ohm														
Output Voltage															
<b>MIDI Input</b>	2 x via DIN jacks at breakout cable														
<b>MIDI Output</b>	2 x via DIN jacks at breakout cable														
<b>Cable</b>	Adapter Cable to 4 x DIN to 9-pin D-Sub Connection cable Seraph PCIe Card / MWX; 26 pin ribbon cable														